

## SPEC SHEET + MEASUREMENTS

### District® Women's Perfect Tri® Long Sleeve Tunic Tee. DT132L

#### Product photo



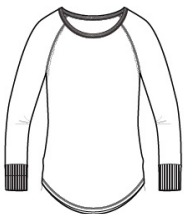
Long sleeve tunic version of our lightweight and soft crew.

- 4.5-ounce (153 GSM)
- 50/25/25 polyester/combed ring spun cotton/rayon, 32 singles
- Raw edge detail at armholes
- Coverstitch details
- 1x1 rib knit neck
- Tear-away label
- Rib knit elongated cuffs
- Longer tunic length
- Curved hem

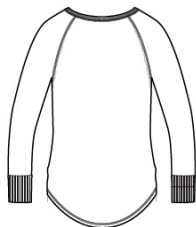
#### CARE INSTRUCTIONS

Machine wash cold, with like colors. Only non-chlorine bleach. Tumble dry low. Warm iron if necessary.

#### Sketches



front



back

# SPEC SHEET + MEASUREMENTS

## District® Women's Perfect Tri® Long Sleeve Tunic Tee. DT132L

### PRODUCT MEASUREMENTS

	XS	S	M	L	XL	XXL	3XL	4XL
Body Length at Back	29	29 1/2	30	30 1/2	31	31 1/2	32	32 1/2
Bust	17	18	19	20 1/2	22	23 1/2	25 1/2	27 1/2
Sleeve Length	29 3/4	30 1/4	30 3/4	31 3/8	32	32 5/8	33	33 3/8

**Body Length at Back:** Measured from high point shoulder to finished hem at back.

**Bust:** Measured across the chest one inch below armhole when laid flat.

**Sleeve Length:** Start at center of neck and measure down shoulder, down sleeve to hem.

### SIZE CHARTS

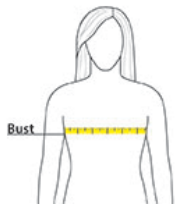
	XS	S	M	L	XL	XXL	3XL	4XL
Size	2	4/6	8/10	12/14	16/18	20/22	24/26	28/30
Bust	32-34	35-36	37-38	39-41	42-44	45-47	48-51	52-55

# SPEC SHEET + MEASUREMENTS

District® Women's Perfect Tri® Long Sleeve Tunic Tee.  
DT132L

## HOW TO MEASURE

---



### BUST

Measure under the arm and around the fullest part of the bust with arms down, keeping tape horizontal.

## COLORS

---

Please note: PMS code information is shown only when an exact match is available.



Black Frost  
PMS 426C



Blush Frost  
PMS 2341C



Grey Frost  
PMS COOL  
GREY 11C



Navy Frost  
PMS 2379C



White