

SPEC SHEET + MEASUREMENTS



District® Women's Perfect Tri® Fleece Short. DT1309

Product photo



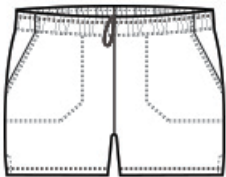
Like its namesake—the iconic Perfect Tri Tee—our Perfect Tri Fleece blends three yarns for an unbelievably soft short at an unbeatable value.

- 7.1-ounce (240 GSM)
- 54/40/6 polyester/combed ring spun cotton/rayon, 3-end fleece
- Mitered front pockets
- Self-fabric elastic waistband with dyed-to-match interior drawcord
- Side seamed
- 3-inch inseam, size medium
- Tear-away label

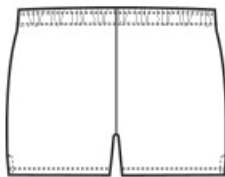
CARE INSTRUCTIONS

Machine Wash Cold With Like Colors. Only Non-Chlorine Bleach When Needed. Tumble Dry Low. Cool Iron If Necessary.

Sketches



front



back

SPEC SHEET + MEASUREMENTS



District® Women's Perfect Tri® Fleece Short. DT1309

PRODUCT MEASUREMENTS

	XS	S	M	L	XL	XXL	3XL	4XL
Size	2	4/6	8/10	12/14	16/18	20/22	24/26	28/30
Inseam	3	3	3	3 1/4	3 1/4	3 1/2	3 1/2	3 1/2
Waist	13 3/4	14 3/4	15 3/4	17 1/4	18 3/4	20 1/4	22 1/4	24 1/4

Inseam: Measured from crotch seam to hem.

Waist: Measured point to point across the waistband when laid flat.

SIZE CHARTS

	XS	S	M	L	XL	XXL	3XL	4XL
Size	2	4/6	8/10	12/14	16/18	20/22	24/26	28/30
Waist	24-26	27-28	29-30	31-33	34-36	37-39	40-43	44-47
Hip	34-36	37-38	39-40	41-43	44-46	47-49	50-53	54-57

SPEC SHEET + MEASUREMENTS



District® Women's Perfect Tri® Fleece Short. DT1309

HOW TO MEASURE



Waist Measure around the smallest part of the natural waist.

Hips With feet together, measure around the fullest part of hips, keep tape horizontal.

COLORS

Please note: PMS code information is shown only when an exact match is available.



Black
PMS BLACK
C



Grey Frost
PMS COOL
GREY 11C